

Getting Started with your XD Indexer

To find complete information on your Indexer:

Documentation can be found in the Indexer Reference Manual which is a pdf file found on the Documentation CD included with this order or on the ORMEC website and also in the Help associated with the MotionSet™ commissioning software.

What you'll need:

1. A computer with Internet access and an Ethernet port.
2. An Ethernet cable. A crossover cable may be needed depending on your Ethernet port.
3. A small screwdriver.
4. Wire to connect power.

Getting Started:

You're eager to get connected and see your motor spinning. This Getting Started guide is designed to walk you to that goal. However, it is a simplified guide. If at any time you have questions please stop and consult the complete Reference Manual.

Warning: You are working with industrial equipment, not a consumer product. It is designed to be installed and operated by qualified personnel. Qualified personnel are persons who by way of training or experience and instruction of automation equipment and electronics are authorized to install, commission and service hazardous electronic equipment. Qualified personnel are aware of pertinent standards and safety precautions and follow them.



Incorrect procedures can result in injury to people and equipment, possibly serious including death.

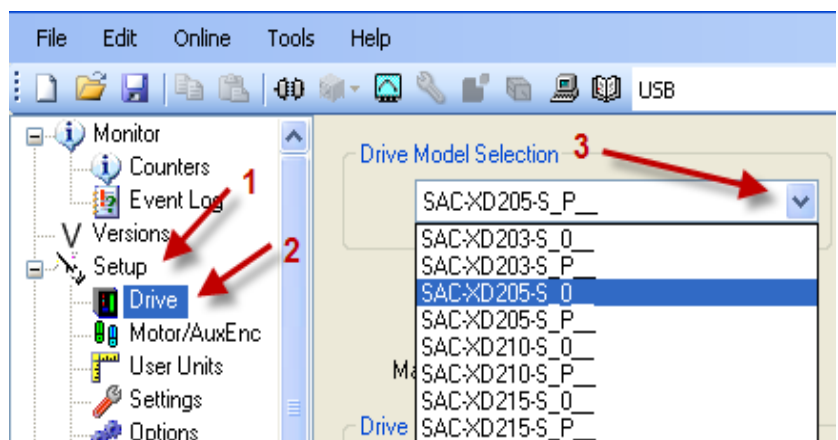
The simplest and fastest way to get started is to use an integrated system from ORMEC. With ORMEC motors and cables you can connect quickly, all the connectors are provided and designed to plug together. Quickstart assumes you are using ORMEC motors. If not you will need to add an additional step or two putting together cables.

Let's get started.

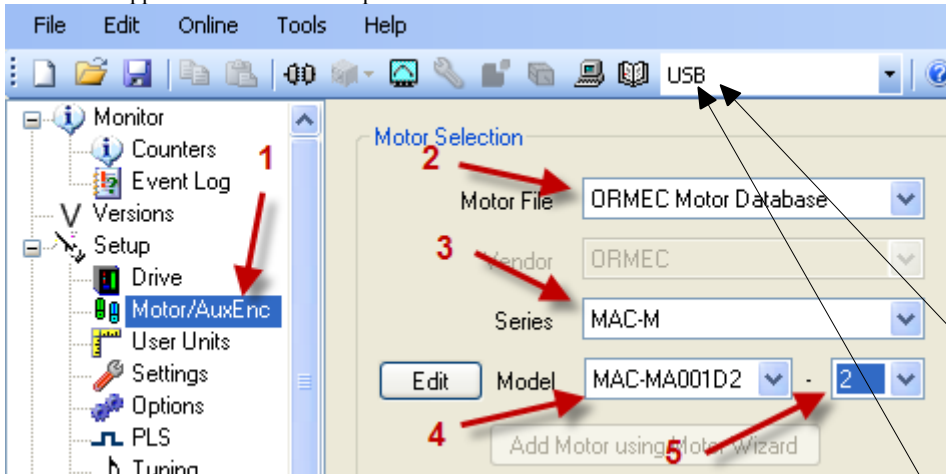
1. If you don't have MotionSet™, the XD commissioning software, on your computer go to <http://www.ormec.com/Products/Software/MotionSet.aspx>, Login and then click on the MotionSet™ Download page located in the far right column under Related Software and install it now.
2. Connect control power. Use 115 VAC or 24 VDC depending on model purchased.
 1. DC uses TB1 pins 24V, 24R and FG. (Model numbers SAC-XD***-*D)
 2. AC uses TB2 pins r and t. (Model numbers SAC-XD***-*A)
3. Connect main power (incoming motor bus power) on TB2 single phase or 3 phase using pins L1, L2 and L3. Do NOT exceed motor rating. XD2xx-Use 115 or 230 VAC, XD4xx use 230 or 460 VAC.
4. Connect the motor. Feedback to J5 on the bottom, power to TB4 (on XD2xx) or TB2 (on XD4xx) on the front. With an ORMEC cable Red to U, white to V, black to W, green to GND and shield to SH or GND.
5. Run (open) MotionSet commissioning software. Select File, then New from the menu.
6. Select your drive.
 1. Open the Setup page in Project tree.

Related Software

[MotionSet download page](#)



- Then the Drive page.
- Then pull down the drive list and select your drive.
- Note: not all option letters in model number are shown. Those needed are shown. The -S indicates encoder support, the P pacer support installed and 0 no pacer.



- Select your motor. Note the model number on the motor.
 - Open the Motor/AuxEnc page.
 - Select the database.
 - Select the series.
 - Select the model.
 - Select the resolution.
- Choose to communicate with the drive via Ethernet or USB. Follow the appropriate step.
- For USB – Connect a USB cable from your computer's USB port to J2 on the drive using a standard A/B. This requires MotionSet version 1.1.0.153 and the USB drivers must

be installed on your system during MotionSet installation. Select USB for the communication port.

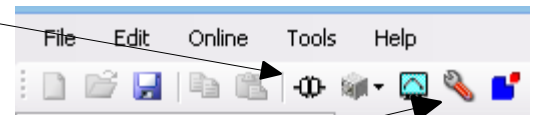
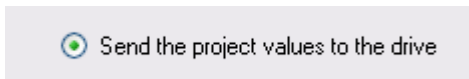
- For Ethernet - Connect an Ethernet cable from your computer to J1 on the Indexer. The default Ethernet address of the Indexer is 192.168.1.250. A crossover cable may be required depending on your Ethernet port. Guidance for configuring your Ethernet port can be found in the Help in MotionSet™. Select your IP address for the communication port.

- Turn on power to the Indexer, wait until the IP address display is complete and then establish the communications link to the Indexer by clicking on the Connect ICON



- When prompted save the file.

- Send the project to the Indexer.



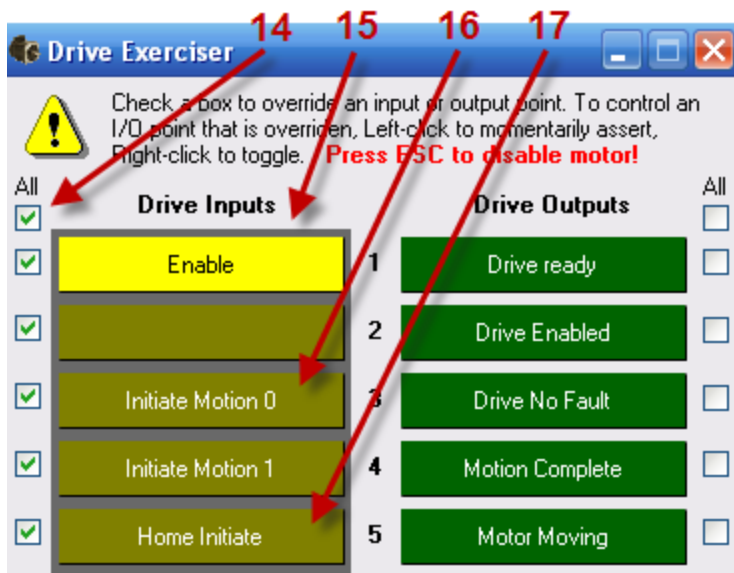
- Open the I/O exerciser by clicking on the I/O exerciser ICON



(looks like a wrench).



- Warning:** Make sure the motor is clear of all objects and not connected to anything. Shortly the motor shaft will turn and we don't want to damage anything or anyone.



- Click on check box under All to enable the I/O exerciser to override the physical inputs.
- Right** click on IN1 - ENABLE to enable the Indexer.
- Click on IN3 – Initiate Motion 0. The motor should rotate counterclockwise for 1000 counts then 1000 counts clockwise.
- Click on IN5 – Home Initiate. The motor should rotate clockwise to the encoder reference signal.

Congratulations. You have a working XD Indexer, the most intuitive and powerful Indexer on the market. We suggest that you explore MotionSet™. Motions are easily defined in the motion table. When you are ready complete details can be found in the on-line help in MotionSet™ and the Indexer Reference Manual.

If you have questions ORMEC support is always there to help – email support@ormec.com, call at 585-385-3520 or visit <http://www.ormec.com/Support/TechnicalSupport.aspx>